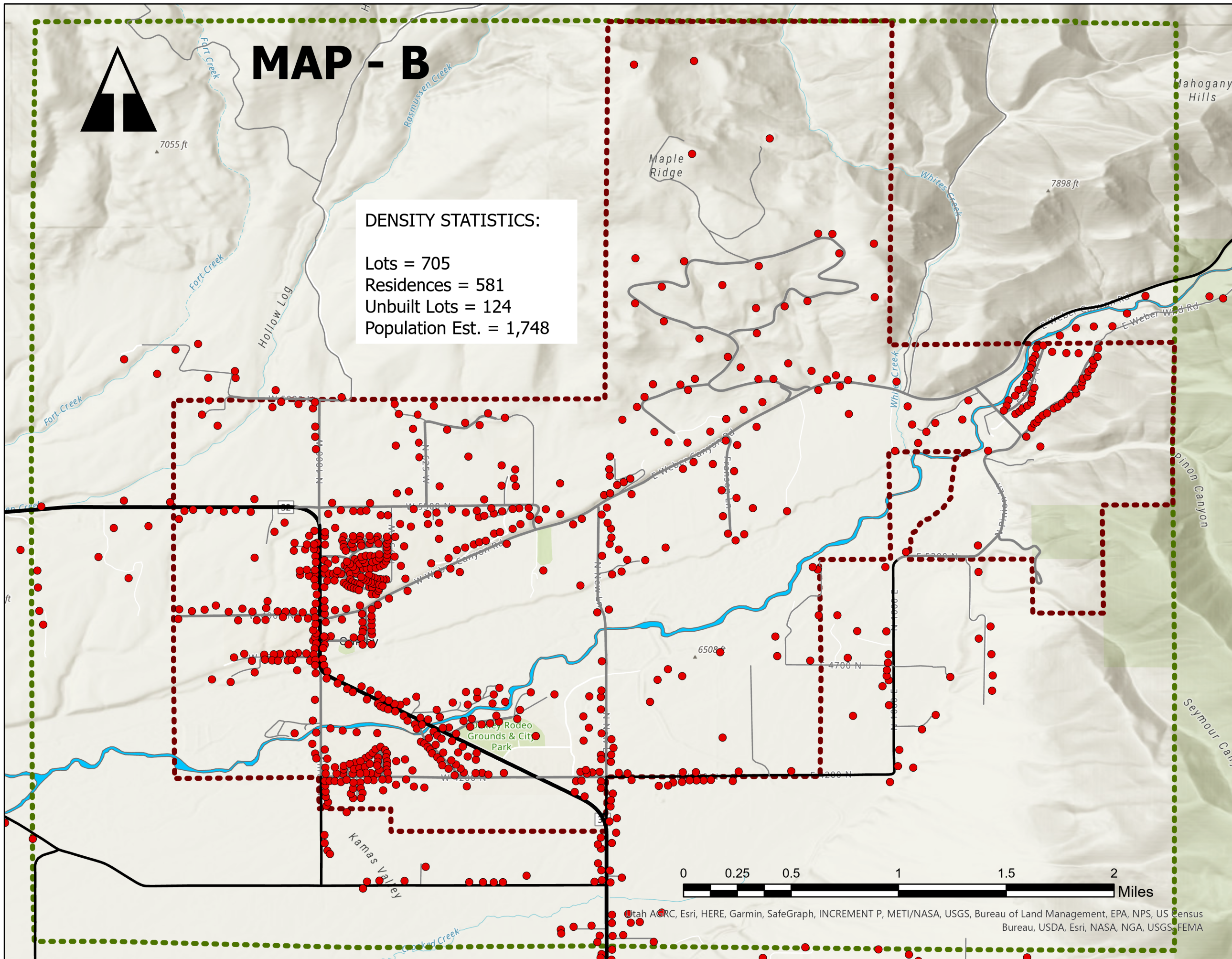


The General Plan
Maps of
Oakley City

City Density

The Maps Which Define
Oakley's Geography and
Guide Future Planning



DENSITY STATISTICS:
Lots = 705
Residences = 581
Unbuilt Lots = 124
Population Est. = 1,748

- Address Points
- Roads
 - Private
 - A
 - B
 - C
- ⋯ Municipal Boundaries
- ⋯ Annexation Declaration
- Weber River

NOTE: All information and data on this map is for planning purposes and may be subject to field or source verification by Oakley City in actual project reviews.

© Utah AIGRC, Esri, HERE, Garmin, SafeGraph, INCREMENT P, METI/NASA, USGS, Bureau of Land Management, EPA, NPS, US Census Bureau, USDA, Esri, NASA, NGA, USGS, FEMA